



# KEEPING IN TOUCH

THE NEWLETTER OF THE  
CARTHAY SQUARE NEIGHBORHOOD ASSOCIATION  
Fall 2004



## COMMUNITY REPRESENTATIVES TO MEET WITH CITY ON STREET SAFETY

*By Steven Huston*

One of the problems that increasingly confronts our neighborhood is automobile speeding and cut-through traffic. Cut-through speeders try to avoid congestion on main streets such as Fairfax and La Cienega, Pico and Olympic by detouring through our residential streets attempting to save a few minutes in their daily commute. These drivers are inconsiderate and endanger all of us, but especially our children and elderly residents. The Steering Committee has been concerned about the issue for quite some time and formed the Traffic Committee in March of 2004 to explore potential solutions.

At the time of this writing, we are pleased to report that September 7, 2004 has been tentatively scheduled to meet with members of the Carthay Square Neighborhood Steering and Traffic Committees, our field deputy Paul Backstrom from Councilman Weiss' office, Mario Enriquez a Senior Engineer with the City Department of Transportation, Officer Henry of the police department, and local residents to determine what options are available to us to help control our traffic problems. Resulting recommendations would be presented to our neighborhood for approval.

A survey by a large city police department found the following compelling points:

1. Speeding in residential neighborhoods is the single greatest complaint made to police and city councils nationwide.

...continued on page 2

## CSNA NOW CSNA, INC.

*by Larry Goldstein*

Yes, Carthay Square Neighborhood Association is now a non-profit, mutual benefit corporation. This means that we can have a bank account in CSNA's name and that we, as CSNA members, have no personal liability if the Association is ever involved in litigation. For those of you (you know who you are) who feared joining CSNA because of the possibility of liability, you now have no excuse.

The incorporation formalizes our status as an "official" neighborhood association. This is important when an officer or member of CSNA wants to talk with the police or the city council member or any other public agency or department. We are no longer just a group of concerned citizens but are now an entity which must be reckoned with.

For the record, the Adams & AuCoin law firm provided incorporation services at a fee that didn't drain the bank account and

...continued on page 3

## MANY THANKS FROM CSNA

Carthay Square Neighborhood Association would like to express its appreciation to three neighborhood residents for their special contributions. Many thanks to:

- ◆ Artist Marie Cenkner for the fresh and friendly Newsletter design panel reflecting architectural and ornamental elements of our neighborhood.
- ◆ Kenn Morris who carefully researched and wrote the piece on the history of Carthay Square.
- ◆ David Logan, graphic artist, who continues to provide us with professional layout services.

Marilouise Morgan  
Acting Editor



## HOMEOWNER ASSOCIATIONS IN WEISS' DISTRICT FORM COALITION

By Marilouise Morgan

Presidents or Board Members representing 23 homeowners/residents associations in the Fifth Council District met in June and July to discuss current problems threatening the quality of life for City residents and, particularly, those living in the Fifth CD. While the representatives came from different areas on the Westside and the San Fernando Valley, the following major issues were identified as those of common and immediate concern:

- Inclusionary Housing Ordinance (impact of greater density and suspension of zoning regulations)
- Traffic (congestion due to over-development and inadequate infrastructure).
- Over-development and Inappropriate Development (zoning changes at developers' request, disregard of community plans, and poor notification procedures).
- Crime and Community Safety (inadequate law enforcement services).
- Poor Performance By City Agencies (selective enforcement, inadequate staffing, pressure from lobbyists, and lack of responsiveness).

Participants agreed to form The Coalition of Homeowner Associations - 5th CD as an advocacy organization to protect the quality of neighborhoods in the 5th District and to request a meeting with Fifth District Councilman, Jack Weiss.

The Councilman held two meetings with presidents (or designated representatives) of HOA/neighborhood associations this month - one on August 5 in his San Fernando Valley District Office and another for Westside Coalition members on August 9

at his West Los Angeles District Office. Both meetings were well attended by representatives from the neighborhood associations and homeowner groups. Weiss and his staff listened attentively to participants, took extensive notes on issues and recommendations, and agreed to meet quarterly with the Coalition.

## PICO NEIGHBORHOOD COUNCIL SEEKS AREA IMPROVEMENTS

By Marilouise Morgan

If you live, work, own or operate a business in Carthay Square, you are a stakeholder in the P.I.C.O. Neighborhood Council. Established under the City Charter reform of 1999, neighborhood councils were created to help residents better connect with their City Government. Councils are intended to bridge the distance between City Hall and neighborhood communities and have the potential to influence decisions and affect changes in their community.

The Board of the P.I.C.O. Neighborhood Council consists of 23 members. Eleven are elected from residential groups covered by the Council. Other members are elected or appointed to represent business, nonprofit organizations, schools, or youth in the area. Like other councils, PNC spent much of its first year developing operating routines that would satisfy the City's Department of Neighborhood Empowerment (DONE). However, a number of achievements were also logged for this new body including the following:

- Established a "Hot Spots" Committee, which meets regularly with Kim Willis of the City Attorney's Office and representatives of several City agencies to address problems in the community.

- With State and other local agencies, held two educational meetings providing technical assistance to small businesses and investors in the community.
- Participated in a major tree-planting program funded by the City Department of Environmental Affairs, which will see 175 trees planted along the San Vicente Corridor and on residential parkways by the end of the year.
- Financially assisted events of several neighborhood associations, such as the CSNA Block Party of 2003, provided money for special projects at several schools in the area, and contributed to the start-up fund for the Carthay Farmers' Market.

P.I.C.O. Neighborhood Council Board holds public meetings the second Wednesday of each month at the Tom Bradley Youth and Family Center located at 5213 W. Pico Blvd. at 6:00. The community is invited to learn of Board activities and provide comments about the issues and action items. A retreat for Board Members has been scheduled for September to develop goals and objectives for 2004-2005.

...continued from page 1, STREET SAFETY

2. A very high percentage of speeders in a neighborhood live in that neighborhood.
3. It is not unusual for speeders to be clocked in excess of 40 mph in 25 mph zones.
4. Speeds exceeding the posted limit are cited as contributing factors in over 30% of accidents.

Many residents in Carthay Square have voiced their concerns about this issue, and the Steering and Traffic Committees believe the situation merits the city's attention before a regrettable accident occurs. We will keep the neighborhood informed of progress as we work toward a resolution of this critical issue.

...continued from page 1, CSNA NOW CSNA

has recently provided referrals to insurance agents which like the law firm, specialize in neighborhood associations.

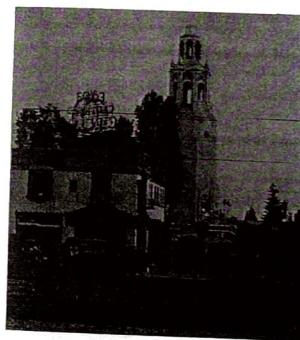
If you have questions about the incorporation you are invited to come to any of the monthly directors' meetings or the next general meeting.

## GROUND BREAKING CEREMONY HELD FOR PICO PLAZA

By Marilouise Morgan

On Monday, August 23, the first phase of construction of the new Pico Plaza was begun. Home Depot will be the anchor store for this extensive project, which will be located at Pico Boulevard and Rimpau. The developer, CIM, plans to include a few stores well established in the Southern California area, as well as retail space for local merchants, two upscale family restaurants, and a dispatch office for MTA. A projected completion date has not been announced.

## The Carthay Circle Theater



## Is It Time for Carthay Square to Become a Historic Preservation Overlay Zone (HPOZ)?

By Michael Sims

The Los Angeles City Council adapted the first HPOZ ordinance in 1979 in response to concerns about the destruction of communities such as Bunker Hill and Chavez Ravine. From then to now, only 16 communities have earned the HPOZ designation. Both South Carthay and Carthay Circle are counted in that number.

The purpose of the HPOZ is to preserve and maintain the unique character of the designated community. Had the HPOZ existed in Carthay Circle back in the late 60's, there is no doubt that today we all would be enjoying the beautiful and historic Carthay Theater.

So, is it time for Carthay Square to become a Historic Preservation Overlay Zone (HPOZ)? My answer is yes. With all things considered, it is far better to take the pro-active approach than the re-active one in times like these.

It is time for Carthay Square to become the 17th HPOZ in the city of Los Angeles to insure that the existing architectural integrity of this community is preserved against demolition, insensitive remodeling and/or new construction and zone changes.

A HPOZ committee is forming and you are invited to join us. The Carthay Square HPOZ Committee needs your full support.

Please expect more information in the coming months on how you can help Carthay Square preserve its historic beauty by becoming an HPOZ.

Thank you for your attention to this matter.

## SPOTLIGHT ON CARTHAY CENTER SCHOOL

A Report from the Friends of Carthay Center (FCC) a Support Group for Carthay Center Elementary School

### Innovative Blockwork Program for Kindergarten

Blockwork, an extremely creative learning tool which is based on a social studies based teaching model, will be implemented in the kindergarten program beginning this fall. Friends of Carthay Center and school staff are very excited to add this innovative program to the kindergarten curriculum at Carthay Center School.

Using Blockwork, children simulate a functioning community with wooden blocks and practice math, language, science, and literacy skills as they "play" with the blocks. In addition, they develop problem-solving, spatial reasoning, and motor skills. The kids develop skills in working cooperatively, and they are inspired to ask questions based on their blockwork projects, e.g., how do elevators work? why does the airport runway need to be near the control tower? Teachers use the questions that arise from block play for lessons on every subject from art, economics, and government to science.

"This kind of structured play sparks a child's innate curiosity and creates a natural desire for lessons in math, reading, writing, geography and history," according to Shirley Levine, former Director of Herschel Day School. "It develops research skills and creates a microcosm of the democratic process," she continued. "It is one of the best ways to teach teamwork and problem-solving."

### MEMBERSHIP ROSTER

Congratulations to Mamie and Brian Linder! Their names were selected from those FCC membership forms submitted by the

...continued on page 4



August 16th deadline to receive a \$50 gift certificate to Hunan Taste. Thanks to everyone who has sent us a completed form. If you haven't already sent in your form, please do it soon. The information is important to help Friends of Carthay Center succeed.

## Fundraising

### NMF Workshop Attended by FCC Members!

Friends of Carthay Center (FCC) has targeted neighborhood grant money and matching funds from NMF worth \$10,000 for school beautification. Disney Imagineer and FCC member David Dalke and his wife Pascaline Doucin-Dahlke have developed a comprehensive plan involving increased greenery and color. Thanks to Judy Patterson and Amy Atlas who recently attended a Neighborhood Matching Funds grant writing workshop. They will assist David, who already has expertise in grant writing.

### LA Marathon to Benefit Carthay Center

We need runners and cyclists! Sign up to run or bike the LA Marathon on Sunday, March 6, 2005 as a fundraiser for Carthay Center School. Those interested should contact David Dahlke at 323-571-1516 or email - davidpascaline@comcast.net. For more information on the marathon see [www.lamarathon.com/2004/index.php](http://www.lamarathon.com/2004/index.php)

## MORE VOLUNTEER OPPORTUNITIES

### Carthay Circle 80th Anniversary Neighborhood Festival

Sunday, September 19  
From 11 am to 3 pm

Carthay Circle is generously donating all proceeds to Carthay Center School to restore programs which may have been affected by budget cuts. How can you help?

### Purchase a booth.

What a great way to promote your business to the Carthay Circle, South Carthay, Carthay

Square, Miracle Mile and Wilshire Vista neighborhoods!

### Donate an item for the silent auction.

Gift certificates, free dinners, free consultations and/or other services are always welcome. What a great way to advertise your company and promote new business opportunities!

### Volunteer your time as a Festival Volunteer.

The organizers need volunteers in every area. Every little bit helps, even if you can only contribute a small amount of your time. We will be counting on FCC Parents to assist on the day of the event. Contact **Tamara Rosen** by calling 323.935.5665 or send an e-mail to [tamaraiaam@earthlink.net](mailto:tamaraiaam@earthlink.net)

### HELP A CHILD READ

Friends of Carthay Center is actively looking for volunteers to join in the three Reading Programs offered at the school. The next training dates and training locations for each program are shown below. For additional information, contact **Bernice Katcher** call 323-934-4632 or send an email to: [bkatcher6150@comcast.net](mailto:bkatcher6150@comcast.net)

#### Wonder of Reading

Thursday, September 23, 2004  
5:30 PM - 8:30 PM - Evening!!!  
The Wonder of Reading Headquarters  
120 North Robertson Blvd.

#### Koreh L.A.

Tuesday, September 28, 2004  
9:30 a.m. - 12:30 p.m.  
The Jewish Federation, Rooms A and B  
6505 Wilshire Blvd.

## SAVE THE DATE

### Carthay Circle 80th Anniversary Neighborhood Festival

Sunday, September 19  
11 a.m. to 3 p.m.

COMMODORE SLOAT DRIVE  
BEHIND the CARTHAY CENTER  
SCHOOL

All proceeds from this festival will be donated to Carthay Center Elementary School, to fund programs and services that have been cut by the Los Angeles Unified School District.

The Festival, geared toward families and children, will feature a petting zoo, pony rides, train ride, moon bounce, a swing, and Rockie the Clown who does face painting. A Dixieland jazz band will play for the duration of the Festival. Subway, Bennett's Ice Cream from the Farmer's Market, and Kettle Corn will provide nourishment. There will also be a fantastic silent auction.

Confirmed attendees are the Los Angeles Fire Department (fire trucks and child safety information), California Highway Patrol, Los Angeles Department of Water and Power, Carthay Center Elementary School principal and PTA, and many more. The California Highway Patrol will provide a free car seat safety inspection clinic on the school campus by appointment only.

For additional information, please visit the website of the Carthay Circle Neighborhood Association at [www.carthaycircle.org](http://www.carthaycircle.org)

## HAIKU

By Norma Glickman

Birds migrate in groups  
taking turns to lead the weak  
man strives for himself

Brace of baby ducks  
paddle fast to stay with mom  
cares ripple away

Wind blows on water  
river flows down to the sea  
bears mu dreams away

## JAMESON AND NICKERSON HONORED BY CSNA

Outstanding Service Awards were given to Robin Jameson (left below) and Susan Nickerson (right below) at the Carthay Square Neighborhood Association Meeting on April 29, 2004. Each was lauded for her continuous activism and the significant contributions she has made to the quality of life in the Carthay Square neighborhood.



## THE POETRY CORNER

"Perhaps our heart  
is made of the answer  
that is never given"

Rene Char

### The Answer:

Hasn't life taught me all by now -  
This long life that in its haunting  
shows the way.  
How does the squirrel know it  
and the snail in its silver meanderings.  
The mourning dove in her ragged nest  
outside my window watching me.  
The winter trees with their bare, beseeching  
branches, seed pods and tiny yellow finches.  
How do they know?  
The wind work; grass covered with leaves  
umber and burnt sienna.  
The coyote's neat feet padding the trail.  
An orchid plant seducing me.  
An exploding star.  
Doesn't my heart by now know it. all?

Audrey Hargreaves  
January 31, 2004

## What If.....?

for just one generation -

there was a Baby Exchange  
between enemies  
and looking into the faces of the newly born -  
no-one could tell whether they were:

Albanian or Serbian -  
Hutu or Tutsi -  
Palestinian or Israeli -  
Protestant or Catholic -  
Pakistani or Indian -

and what if

no-one knew who had whose babies, and  
we all were bound together by our collective  
love

and what if

all the people in the world shared the responsibility  
of all the children in the world -

Would all the parents of the world unite  
to protect all the children of the world?

Would we stop killing other people's babies  
for fear we would be killing our own?

Would we finally recognize how interconnected  
we all are?

Would we finally understand we are but  
one human family?

Would the endless cycle of  
murder revenge murder revenge  
finally cease?

Just Wondering .....?

By Norma Glickman



## A BRIEF HISTORY OF CARTHAY SQUARE

Back before the American Revolution, the Spaniard Gaspar de Portolá's 1769 expedition, crossing the empty flatlands below what are now the Hollywood Hills, stumbled across an expanse of seeping and bubbling tar (brea). The land to the west of what they named La Brea was an expanse of undulating flat land covered with indigenous flora.

### El Rancho Rodeo de las Aguas

In the 1840s, Maria Rita Antonio Valdez de Villa became the owner of El Rancho Rodeo de las Aguas (Ranch of the Gathering of the Waters), so named because when it rained, runoff from the Santa Monica Mountains emptied into a noisome swamp, *ciénega*. For \$17.50 in cash, she bought the 4,539 acres west of its border with the Rancho la Brea at what is now Fairfax Avenue, which includes all the Carthays, as well as Beverly Hills. Known also as the Rancho Antonio, Maria's house sat near the 21st century intersection of Sunset Boulevard and Alpine Drive.

But even at \$17.50, Maria soon decided she had paid too much – it just wasn't safe. The year 1854 was the worst in the criminal annals of the City of the Angels, with at least one murder per day, in a city with only the smallest fraction of today's population. And things were even worse on the Rancho Rodeo. Wild vaqueros, herding wilder Mexican steers, fought each other at roundups near present-day Pico and Robertson boulevards.

Dispossessed Indians prowled and preyed; so did rustlers and stagecoach robbers. The outlaw Tiburcio Vasquez was hunted down near Maria's ranch house, to which she went only when necessary, and then with an armed escort. Before long, she sold her whole domain to Benjamin Davis Wilson, dubbed "Don Benito," and another Yankee adventurer, Henry Hancock, for \$500 down, \$500 in notes, and a promise



*An Advertisement for the Carthay Center at its inception...*

Consider the Carthay Center shopping district pictured above! Eighteen beautiful shops grouped in artistic ensemble, to serve the community with every need. No other Los Angeles development has, or is planning anything so unique, so distinctive, so useful. And it is only one of many features that make CARTHAY CENTER different, superior – a wonderful investment!

of \$3,000 more at some unspecified date. Hancock also owned El Rancho la Brea and its tar pits, and what would someday be Hancock Park. But he was low on cash so he sold his share in the Rancho Rodeo de las Aguas to William Workman. In 1862, Workman planted 2,000 acres in wheat, and, to protect his expected bumper crop, put up a costly board fence around three sides, banking on the Santa Monica Mountains to protect his northern flank.

Squatters and rancheros carried his fence off piece by piece and drought killed his crops. Unable to sell or feed their cattle, area ranchers drove whole herds off the Palos Verdes cliffs into the ocean. Banks closed. Workman and Wilson tried to sell out for \$12,000 in 12 annual installments. There were no takers. Then, the Los Angeles River flooded, turning El Rancho Rodeo into a fathoms-deep lake. Workman committed suicide. But Wilson was unsinkable, like his future grandson, George Smith Patton.

### Water and Oil and Ben Wilson

Co-founder of the California orange industry and of Wilmington, founder of the San Gabriel Wine Company, a Los Angeles mayor, first Indian Agent for Southern California, a state senator, explorer, and exploiter of the mountain that bears his name, Wilson surprised none of his contemporaries with his readiness when the discovery of oil set off the Black Gold Rush. For \$500, he allowed the Pioneer Oil Company to use up its capital digging dry holes. In 1900, the Amalgamated Oil Company tried again for oil only to find that their drilling equipment couldn't go deep enough to find the oil that was eventually found a decade later. Instead, they found water and formed the Rodeo Land and Water Company.

Beverly Hills incorporated a large part of El Rancho Rodeo in 1914, but growth was slow. In 1920, only 700 people lived in the new city. Most of the old rancho was still in the boondocks growing only lima beans and California poppies. Sunset, Santa

Monica, and Wilshire Boulevards had hardly developed beyond dirt roads.

### Carthay Center and Harvey McCarthy

Then, on July 30, 1922, J. Harvey McCarthy publicly announced plans in *The Los Angeles Times* for the development of a large tract of land south of Wilshire, west of Fairfax, east of the Beverly Hills city line, and south to the Los Angeles city limits, that had recently been the site of an airplane flying field. The name selected for the new subdivision was Carthay Center.

McCarthy, a native son of California and grandson of a pioneer, wanted to establish a community center as a focus of culture for the preservation of California traditions and as a memorial to the pioneers. This he did with the Carthay Theatre, the Amanda Chapel, and the naming of streets for early Californians, such as Abel Stearns, Jose Antonio Carrillo, Co. J.J. Warner, and Eulalia Anila De Perez, a well-known Los Angeles mid-wife. The development also included an 18-store shopping center.

### A Theatre and a Chapel

The Carthay Circle Theatre opened on May 30, 1926, with the premiere of Cecil B. DeMille's *Volga Boatman*. Both the theatre and the movie were acclaimed. The theatre, demolished in 1969, was a memorial to the pioneers as well as an expression in architecture and decoration of the history and the very spirit of California. It housed paintings, sculpture, and historical objects covering the remotest period of California history, down through the early Spanish settlement and including the Gold Rush of 1849.

The Amanda Chapel was dedicated to the memory of Amanda Anderson McCarthy, Harvey's mother. A nondenominational and nonsectarian edifice then known as the "Church of Religious Liberty," it is now an Anglican church on the triangle of land between Carillo, Stearns, and Olympic

Landscaping work for the new subdivision was placed in the hands of Wilbur D. Cook, Jr., an eminent landscape architect and president of the Pacific Chapter of the American Society of Landscape Architects.

Cook had laid out Beverly Hills and, with another renowned architect, Myron Hunt, helped plan the World's Columbian Exposition in Chicago, the Metropolitan Park System of Boston, the United States Military Academy at West Point, and was employed by the cities of New York, Washington, Chicago, and Baltimore in their city planning projects.

Plans were consolidated with the city to widen Wilshire Boulevard to a remarkable 200 feet along Carthay Center's 3,100 foot length (Fairfax to La Cienega), and proposed widening Fairfax to 80 feet south to the Washington street district. At this time, the Wilshire frontage was dedicated "forever" to residential purposes, specifically prohibiting businesses forever (forever turned out to be less than 40 years).

### Carthay Center Joins Los Angeles

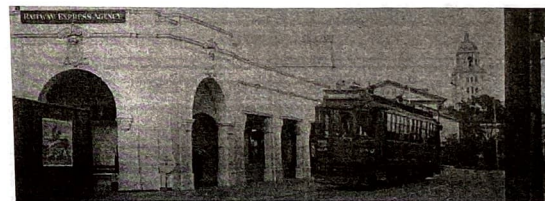
In the spring of 1922, there were almost no buildings along Wilshire between Rossmore Avenue and La Cienega. A year later, this had changed dramatically. Carthay Center was at the forefront of this growth, and by May 19, 1923, voted to annex itself to the City of Los Angeles. Water then became

available from Los Angeles with connections from the main water line under Pico Boulevard.

### The Red Car Comes to Carthay

McCarthy was also successful in having the Pacific Electric Railway extend service through Carthay Center and on to the sea in Santa Monica. At the time, the Pacific Electric went only as far west as the Sherman train yards at San Vicente and Santa Monica boulevards in West Hollywood. With the construction of the Carthay Center station on Eulalia Avenue (soon to become San Vicente), just below the Wilshire intersection, a major line from downtown Los Angeles continued from the rail center at Pico and San Vicente and up San Vicente to the new Carthay Center station, then along San Vicente to Burton Way and the new Beverly Hills station just east of the city hall, then between Little and Big Santa Monica to Westwood and Santa Monica.

With city services and transportation now assured, the late 1920s and early 1930s saw a spurt in the construction of residences in what is now called Carthay Square. A final major improvement came with the widening and improvement of 10th Street as part of the creation of Olympic Boulevard, which stretched from Montebello to the Pacific in honor of the Tenth Olympiad held in 1932.



After traversing the median of San Vicente Blvd. and the median of Burton Way, the trains arrived at the Beverly Hills station at Canon Dr. In the photo above, an outbound train pauses at the Beverly Hills station, with the Beverly Hills city hall in the background. (Photo is from the book "Pacific Electric Stations", available from the Electric Railway Historical Association of Southern California.)

## CSNA CONTACTS

### Steering Committee Members

Ed Goldberg	931-0272
Larry Goldstein	938-9929
Debra Grobman	939-8253
Steve Huston	934-4727
Robin Jameson	931-2774
Ira Klein	(213) 216-6971
Marilouise Morgan	935-3871
Susan Nickerson	965-9990
Michael Sims	857-0025
Charlotte Williams	934-5728

### Block Captains

#### 1000 Block of Hayworth

Michael Sims 857-0025

#### 1100 Block of Hayworth

Joe Connolly 934-4767

#### 1200 Block of Hayworth

Charlotte Williams 934-5728

#### 1000 Block of Hi Point

Susan Nickerson 965-9990  
Sarita Segura (310) 476-9229

#### 1100 Block of Hi Point

Helen Page-Jameson 936-1880

#### 1200 Block of Hi Point

Block Captain Needed

#### 1000 Block of Point View

Robin Jameson 931-2774

#### 1100 Block of Point View

Pearl Greenberg 935-2647

#### 1200 Block of Point View

Wendy Posner 857-0277

#### 1000 Block of Stearns

Larry Goldstein 938-9929

#### 1100 Block of Stearns

Tom Kreuzer 931-8665

#### 1200 Block of Stearns

Rob Fowlkes 937-4432



*The Carthay Circle Theater  
Showplace of the Golden West*

### REMEMBER WHY YOU MOVED TO CARTHAY SQUARE?

Lovely Homes – Attractive Landscaping – Diversity  
Convenient Location – Interesting and Friendly Residents  
Low Crime Rate

**CARTHAY SQUARE NEIGHBORHOOD ASSOCIATION (CSNA)**  
is dedicated to maintaining the quality of life in our neighborhood.

**JOIN NOW!!!**

### MEMBER REGISTRATION FORM

Name \_\_\_\_\_

Address \_\_\_\_\_

Phone \_\_\_\_\_ Email (optional) \_\_\_\_\_

One year membership per household is \$25. Make checks payable to CSNA.

Please mail your completed form and your check to:

**CARTHAY SQUARE NEIGHBORHOOD ASSOCIATION**  
P. O. Box 351799, Los Angeles, California 90035