



KEEPING IN TOUCH

THE NEWSLETTER OF
THE CARTHAY SQUARE NEIGHBORHOOD ASSOCIATION
Summer 2006

KEEPING CARTHAY SQUARE SAFE

Home Invasion Scam

The Carthay area, according to the police, is one of the safest in the city. But residents should still be aware of activities and situations that could be harmful.

Last month, two men dressed in orange vests with "AT&T" printed on the back, rang the doorbell of a Carthay Center resident at 11 a.m., and claimed they were there to retrieve or replace a television cable box. The property was gated and on the security camera the resident could clearly see one man holding a grey outdoor cable box: only this resident didn't have cable.

Prudently, the resident asked the two men for the telephone number of their office in order to verify their work order. One man kept asking if they had the correct address until he could see they were getting nowhere with the resident then politely said, "Thank you, ma'am," and moved on. One of the neighbors also saw these men get into and drive away in a white truck.

The resident called AT&T and it was confirmed that there were no company workmen in the area. Wilshire Division police were immediately concerned with this suspicious activity since this scam is quite prevalent. Information was passed directly so that patrol cars could be dispatched.

The police say that scam artists employing this type of opportunistic crime may or may not have a service vehicle in sight. If they do gain access, their usual mode of operation is for one to distract the resident while the other robs the premises. While this resident was fortunate, others in the area have fallen for the scam.

...continued on page 2

DWP PROPOSES RATE INCREASES

Let Your Voice Be Heard

In April, the DWP proposed an increase of 3.9 percent on water in July and 3.5 percent more in a year, as well as a fluctuating surcharge on electricity. Officials also want to re-instate an electricity surcharge frozen in 1998 that would enable them to pass along to customers cost spikes in natural gas and other fluctuating expenses. They propose establishing another surcharge to help offset the cost of developing renewable energy sources.

The proposals were contained in an outside financial audit of the DWP, released late in March. Information is posted at www.ladwp.org. Two years ago, a coalition of neighborhood councils, a growing political force in the city, forced the DWP to scale back a proposed water-rate hike from 18 percent to 11 percent.

...continued on page 3

50-50 SIDEWALK REPAIR PROGRAM

By Kenn Morris

Half of the 10,750 miles of sidewalk in Los Angeles need repair: there is funding to repair only 64 miles of sidewalk per year. At the current funding level, it would take approximately 50 years to reconstruct all the damaged sidewalks throughout the city.

To address this problem, Councilwoman Wendy Gruell introduced the 50/50 Voluntary Partnership Program, which went into effect last year. Under the program, participating residents pay 50% of the reconstruction cost and the city contributes the

...continued on page 3

CSNA HOSTS 500 AT BLOCK PARTY

More than 500 people attended the CSNA Block Party held last October 19 on the 1000 block of Point View. The day featured food, clowns, face painting, children's games, booths, and the music by the fabulous jazz musicians of Abstract Ensemble. Drawing special interest and excitement were the equipment and firemen of Station 54, and the Peterson Museum's classic vintage automobile from Dick Messer and driven by Larry Goldstein. There was food from In-N-Out Burger and our neighborhood restaurants in Little Ethiopia.

A special thanks to the residents of Point View who gave their time, effort, street, and patience, and to all the faithful volunteers who enthusiastically support the block party year after year; and to all those neighbors who come out to meet with their neighbors and friends and, of course, their dogs' friends.

A particular thanks to Robin Jameson, Michael Sims, Joe Connolly, Marilouise

Morgan, and Karen Vice for working all day, as well as Karen's eye-catching flyer design. And an exceptional appreciation to Ira Klein for all the printing, and to Sol Jamerson, Marie Cenker and Paul Jessel for their photography talents and photo displays of past block parties.

The many businesses who supported us also have our gratitude: water from Sparklets and cake from Hansens; pet food samples from Mehvi at Pet Express; balloons and MY GYM karate demonstration by Robert Meltzer; Mehendi henna tattooing; the tireless Susan Nickerson's Carthay Center Elementary School booth; and Marti Ebersman with her Emergency Preparedness team.

Earning our appreciation were Silly Sally the clown; balloon animals by Shellyanne; face painting by Courtney; psychic readings by Melinda Hess; and sno-cones, popcorn and the bouncer/slide by Jump for Fun.



...continued from page 1, HOME INVASION

Remember, do not open your door to any service, repair, or installation men with whom you have not made an appointment. And, before you do, have them give you the telephone number of their company to confirm they are who they say they are. Do not open your door until you have confirmation: do not be intimidated by official sounding presentations or official looking clothes. If you didn't call the police but the person at the door is dressed in a police uniform, call 911 and verify that officers have been dispatched to your location. The police advise calling 911 even if you are shown identification because fake identification is not difficult to come by. You have a right to do this and any legitimate police officer knows and appreciates this.

...continued from page 1, DWP

The Department of Public Works has also proposed a series of increases of the solid waste collection, transfer, recycling, recovery of waste resources, and disposal fees over the next four years. This fee is also known as the Solid Resources Fee (SRF) and was previously called the Sanitation Equipment Charge.

The monthly fee for a single family dwelling and each unit in a duplex will go to an estimated \$18.00 on September 1, 2006 (\$7.00 increase); to \$22.00 on July 1, 2007 (\$4.00 increase); to \$26.00 on July 1, 2008 (\$4.00 increase); and \$28.00 on July 1, 2009 (\$2.00 increase). The total increase is about \$17.00 over the next three years, effectively a 155 percent hike in the garbage fee.

If you have views on these two proposals, or any other subjects, call our city councilman or the mayor.

Jack Weiss, City Councilman
Los Angeles Fifth District
822 South Robertson Blvd, Suite 102
Los Angeles, CA 90035
310.289.0353
councilmemberweiss@lacity.org

Mayor Antonio Villaraigosa
200 North Spring Street
Los Angeles, CA 90012
213.978.0600
mayor@lacity.org

...continued from page 1, 50-50 SIDEWALK

matching funds. Costs are based on a standard rate per square foot, including labor and materials. Participating residents are asked to sign an agreement detailing the scope of work and their share of the reconstruction cost.

The program guarantees that participating properties move to the top of the priority list, assuring that the sidewalk reconstruction will be completed within the fiscal year, which runs from July 1 through June 30. The program covers concrete sidewalk reconstruction and driveway entrances, as well as tree trimming, tree root pruning or tree removal (as determined by the Department of Urban Forestry), and repair of affected sprinkler systems, if required.

There are other notable financial benefits as well: no permit fees; no inspection fees; workmanship guaranteed for five years; and work is performed according to the latest specifications. To make an appointment or for more detail information, call the Department of Public Works at 818.374.6857,

IMPORTANT: In order to participate in this program, you must obtain agreement with the city before doing anything else.

DO SOMETHING ABOUT SPEEDERS WHO RUN STOP SIGNS

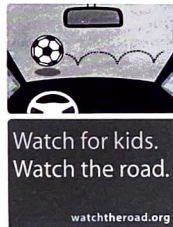
There has been a heightened police presence in the neighborhood to help curb the persistent and dangerous habit of motorists running stop signs. One Stearns resident took note of a particular car that flew down the street each morning at approximately the same time, barely even slowing for stop signs. The complaint to the Traffic Division brought quick action with a patrol car stationed to catch the miscreant.

True to form, the car came barreling down and was about to run the Whitworth stop sign, but at the last moment noticed the police car and

came to a screeching halt. Disappointed, the police said they would be back and try again (they were and they succeeded!). In the meantime, four other motorists received failure to stop tickets, all within a 10-minute timeframe. While this sounds impressive, it's really akin to shooting tightly packed fish in a barrel with a shotgun.

If you are tired of cars speeding up and down your street or flagrantly running stop signs, call the Watch Commander at Wilshire Division when you see such activity, and let them know that we are working closely with Office Henry at West Traffic, and ask for additional patrolling. Do not be hesitant in calling the police to report such dangerous behavior. The more the police hear from residents, the more quickly and often they'll respond.

To report traffic problems, call 213.473.0476



Rosalind's
Ethiopian Restaurant

**15%
DISCOUNT
WITH THIS AD**

323.936.2486

1044 South Fairfax Ave.
Los Angeles, CA 90013

WANTED

We at Carthay Center Elementary are interested in learning more about the history of our neighborhood school. Do you have any Carthay Center trivia or tidbits of information? Know any good anecdotes about Carthay, or about any now-famous people who attended once upon a time? Have you any remembrances of interesting events that have taken place at the school or in the area? We'd love to hear about it! Please email or call Cindy Maya with any neighborhood or school-related trivia: cynmaya@ucla.edu or 323.899.2731.

CARTHAY CENTER ELEMENTARY SCHOOL GIVEN GRANT FOR "GARDEN OF POSSIBILITIES"

By Cindy Maya

A \$10,000 Community Beautification Grant from the City of Los Angeles has been awarded to Carthay Center Elementary School in order to create an on-campus "Garden of Possibilities." The garden will have a border of native California plants and raised planting beds for different grade levels.

The garden will beautify the Carrillo Drive/Crescent Heights side of the school,

attract and support birds and wildlife, and be a wonderful resource for the students and teachers of Carthay Center. Previously called the Neighborhood Matching Fund, this is the second year Friends of Carthay Center (FCC) has secured this grant: last year's helped pay to re-sod Carthay's field.

This project will require a big community effort, as did last year's re-sodding. Neighborhood resident, architect Sara Houghton, already has donated much of her time to create a garden plan and assist in the grant writing. The next steps are to find additional small grants in order to fund such things as a solar-powered hand-washing station, a shed to store the garden tools, and garden art. The school community would most enthusiastically welcome any volunteers for these efforts.

As this is a matching grant, we need to come up with another \$10,000 in kind this summer: volunteer labor, refreshments, cash donations toward supplies, etc. We are asking you, the local community, to dig in and get involved. Donate your surplus garden tools, gloves, plants, Home Depot gift cards, and the like. Or volunteer your manpower to apply for grants, or dig and plant. This project simply cannot happen without the neighborhood's support. Volunteers of all ages are needed on weekends this summer to help dig and plant. Please contact FCC co-president, Vicky Moore at 310.447.4942 or vicky@moostein.com, if you are interested in lending a hand with this exciting project.

To learn more about Carthay Center Elementary, log onto the school website at www.CarthayCenterSchool.org. To sign up for the FCC e-bulletins, stay up to date with the garden's progress, upcoming school events, and toddler playdates, please contact Friends of Carthay Center president Susan Nickerson at susan@nickersonresearch.com or call 323.933.5775.

COUNCILMAN WEISS RESPONDS TO CARTHAY SQUARE'S REQUEST FOR HANDICAP RAMPS

When new curbing was completed following the long construction of the water line along Packard Street, handicap ramps were not built. A number of CSNA homeowners sent complaints to various city offices, including the mayor and Councilman Weiss. An article on this subject also appeared in the last issue of the newsletter, copies of which were also sent to Mayor Villagairosa and the councilman.



Handicap Ramp

Within only a couple of weeks, crews were busy installing handicap ramps all along Packard Street. Up to a few years ago when the program ceased, funds for these ramps would have been available from the Federal government. However, Weiss' office was able to staple together enough leftover bits and pieces of funds from other projects to respond. This is a most welcomed, appreciated, and timely response by our representative, to whom we all offer our thanks.

CARTHAY NEIGHBORHOOD GROUPS JOIN FOR COMMON PURPOSES

By Marilouise Morgan

Following the initial meeting last December, officers of the three Carthay neighborhood associations - Carthay Square, Carthay Circle, and South Carthay - met on February 7 and agreed to band together to address those issues that affect all three communities. While each association retains its separateness, it will join the other two in a Carthay Coalition when dealing with matters of common concern.

These issues, traffic problems, security needs, support of Carthay Center Elementary School, and the development and operation of commercial areas surrounding the Carthay neighborhoods, are of importance to all three areas and can be addressed more effectively by associations acting in concert. Because of the greater number of voters represented in the grouping, a coalition of the three associations should have more influence than an individual neighborhood body in

dealing with city departments and politicians, and in securing important speakers.

In order to promote the identification of issues important to the Carthay

community and to stimulate an exchange of ideas, Walter Moore, a resident of Carthay Circle, has set up an email exchange site for use by Carthay residents. To communicate with others in the Carthay community, residents should access the following non-reply address: <http://groups.google.com/group/Carthay>. Participation is encouraged. Mr. Moore has volunteered to serve as the site's Webmaster. Issues and solutions brought forward will be of value to developing goals and action plans for the Carthay Coalition.

A joint meeting for residents of the three neighborhood associations is being planned. Notices of meeting will be distributed when the agenda is developed and the meeting site confirmed.

M E R K A T O

RESTAURANT • MARKET • GIFT • SHOP

15% DISCOUNT

1036 Fairfax Ave., Los Angeles, CA 90019
Tel: 323.935.1775 or 323.935.1795

10% discount on food
when you bring in this ad

Monday - Thursday



Experience The Taste of...Ethiopia

323.938.8827

1041 South Fairfax Ave., Los Angeles, CA 90019



Kelly deLaat
Estates Director

323-782-1859

www.kellydelaat.com

COLDWELL BANKER

RESIDENTIAL BROKERAGE

Kelly is an award-winning agent who specializes in the Carthay Area. She is your best resource when buying or selling property.

- ☐ Board member of the South Carthay Neighborhood Association
- ☐ Proud sponsor of Carthay Center Elementary School
- ☐ Lives, works, and cares about our unique community

"For Proven Results"

3-1-1- PROGRAM

THE QUICK AND EASY WAY TO CONTACT THE CITY

Using Los Angeles' new 3-1-1 system, residents can make a single toll free call for any non-emergency service, as well as City information. Calls are answered 24 hours a day, 365 days a year by 3-1-1 Ambassadors who are trained to provide information or refer calls to the correct City agency. City Ambassadors can answer questions in English and Spanish, and are equipped to serve the hearing impaired. Through the use of language translation services, 3-1-1 is also accessible in more than 150 other languages.

GRAFFITI REMOVAL

A major benefit of this service is a quick and easy way to report graffiti and have something done about it. When reporting graffiti, it's important to provide the graffiti's location and report it as **VANDALISM**. This will alert the 311 Ambassador to notify the LAPD Gang Enforcement Unit so they can take photos to determine the gang association. Graffiti is proving to be a useful

tool to LAPD in determining the movement of gangs throughout the city. LAPD will notify a graffiti removal service after the officers have their information.

REALTORS SUPPORTING CARTHAY CENTER SCHOOL ARE NAMED FOR 2006-2007

Friends of Carthay Center has announced its new Realtor Sponsors for 2006-2007. Each realtor in this select group has contributed \$500 and has pledged to donate \$1,000 each time there is a sale or purchase of a home within school district boundaries. They will also donate \$1,000 to FCC for each successful referral anywhere in the city (remember to mention your affiliation with FCC).

Please be sure to spread the word about these realtors and the fact that you are a supporter of Friends of Carthay Center. You can always find the current Realtor Sponsor list at www.CarthayCenterSchool.org.

Alphabetical listing of The Carthay Center School Realtor Sponsors for 2006-2007

Stacey Babbitt
Coldwell Banker
www.staceybabbitt.com
stababbitt@aol.com
310-281-3942 (office)
310-804-6027 (cell)

John Barrentine
Keller Williams Realty
www.carthayrealestate.com
john@johnbarrentine.com
310-432-6408 (office)
310-940-9574 (cell)

Ned Brown and Peter Maurice
Coldwell Banker
www.homesincarthay.com
nedbrown@coldwellbanker.com
310-281-3997 (office)
310-993-4338 (cell)

David Gordon
Windermere Properties
www.davidgordon.com
davidgordo@aol.com
310-432-5290 (office)
310-995-3404 (cell)

Robert Cipolloni and Michael Emery
"The LA Home Boys"
Keller Williams Realty - Hollywood Hills
www.thelahomeboys.com
info@thelahomeboys.com
323-422-9899 (Robert's direct)
323-377-0308 (Michael's direct)

Danny Mahelka
Coldwell Banker
www.homesbydanny.com
dmahelka@earthlink.net
310-887-0220 (office)
213-359-4097 (cell)

Sacha Radford
Prudential CA/ John Aaroe
www.sacharealestate.com
sacha@prula.com
310-255-3448 (office)
310-617-4464 (cell)

Mary, Andrew & John Woodward
Coldwell Banker
www.WoodwardTeam.biz
woodwardteam@aol.com
323-860-4265 (office)
323-860-2451

Bob Zay
Keller Williams Realty
www.bobzay.net
bobzay@comcast.net
323-300-1052 (office)
310-927-8646 (cell)

LOCAL BUSINESSES SUPPORT CARTHAY CENTER SCHOOL

New Comerica Bank and Councilman Weiss Each Contributes \$1,000 to Fund

By Cindy Maya

The Carthay Center Elementary School community is very excited about the support it has been receiving from our local businesses. At the May 3rd grand opening celebration of the new Comerica Bank branch at 6301 Wilshire Boulevard, a check for \$1,000 was generously donated by the branch to the Friends of Carthay Center (FCC). This contribution will go towards bringing a new physical education program to the school beginning in the fall.

Los Angeles Fifth District City Councilmember, Jack Weiss has also made a generous \$1,000 donation to Carthay to assist in funding the soon-to-be-added Garden of Possibilities.

Your Neighbor in Carthay

Wouldn't it be great to work with a realtor who understands exactly what it means to own a home in the Carthay area? One who understands the dynamic nature of the Los Angeles area real estate market AND how our special neighborhood fits into the big picture? As a Carthay resident for over five years, John Barrentine understands the unique opportunities of owning a home in Carthay Center.

You need John Barrentine.

- NEIGHBORHOOD INVOLVEMENT**
- Proud Realtor Partner of the Carthay Center School
 - Member, P.I.C.O. Neighborhood Council
 - Member, South Carthay Neighborhood Association Board of Directors



JOHN BARRENTINE
Don't make a move without him.



310-432-6408 john@thebarrentinegroup.com

KELLER WILLIAMS 439 N. CANON DRIVE, SUITE 300 BEVERLY HILLS, CA 90210 www.thebarrentinegroup.com

Vegan Ethiopian @ Rahel's
1047 S Fairfax Ave. Los Angeles, CA 90019 Tel (323) 937-8401

over 25 unique vegan dishes
Bring this flyer for 15% discount (on food only)

Bring This Ad For 15% Discount (On Food Only)

RAHEL INTERNATIONAL VEGGIE CUISINE 100% VEGAN

exotic experience

Rahel Ethiopian Vegan Cuisine
1047 S Fairfax Ave.
Los Angeles, CA 90019

www.RahelVeggieCuisine.com
we cater all occasions
Fairfax between Pico & Olympic

vegan cakes for dessert
fresh flax & fruit juices
raw foods available

This new teaching garden will be installed this summer.

Carthay Center Elementary was also pleased when selected to host a Miracle Mile Chamber of Commerce luncheon held on June 15th. The organization has been a strong supporter of the school this past year and all are optimistic about building stronger ties between the school and our local business community.

DID YOU KNOW?

Did you know that the very first neon sign in the United States identified the Earle C. Anthony Packard dealership at Wilshire and La Brea? And that one out of every seven Packards sold in this country was through this organization?

New to the World and CSNA

Leonardo Valo Roberto

Parents Kaarina and Derek

Abigail Faith Jackson

Parents Annie and Jackson,
big sister Naomi

If there's a birth in your family, let us know so it can be acknowledged in our next newsletter. Contact Kenn Morris at 323.934.9841 or kennmorris@comcast.net

TRAFFIC, TRAFFIC, TRAFFIC

Update By Steven Huston

The speed and increased volume of traffic continues to be of concern here in Carthay Square. To help with the problem, speed humps have been installed on all participating blocks in Carthay Square. Three blocks, 1100 and 1200 of Hi Point, and 1200 on Stearns, did not obtain sufficient number of petition signatures of residents to qualify



for installation of the speed humps. It has been nearly a four-year process of constant contact with the Los Angeles department of transportation, police department, and city council offices to arrive at this point.

Additionally, the LAPD traffic division has stepped up its enforcement of our area during peak hours, particularly at the intersections of cross streets at Whitworth and Packard, to help ensure motorists obeying the posted stop signs. Neighborhood Association Steering Committee members Debra Grobman and Steven Huston are continuing to work with city departments for further solutions to the traffic problems, both short term and long term. Regular phone calls and e-mail communications to the police, transportation, and city council departments are being made.

In addition, on June 28 the Wilshire Traffic Committee, which meets the fourth Wednesday of each month, heard from Debra and Steven about the problems and

possible solutions, such as restricted left or right turns into Carthay Square during peak traffic hours, and other ideas. Present at the meeting were police officers, engineers from the department of transportation, representatives from the city attorney's office, as well as some neighbors at large. The Wilshire Traffic Committee facilitates meetings between concerned residents from various neighborhoods and city departments that can assist in trying to resolve traffic concerns. The city departments will continue to monitor the traffic in our neighborhood.

Please note: One concern with which we all (city departments and residents) agree is that a very high percentage of speeders and traffic rule violators live right in our neighborhood. So it is also up to each of us to pay attention to our own driving habits. Obey the speed limits! Obey the stop signs! Don't hesitate to encourage your neighbors to do the same! Watch the road and drive safely for the sake of all of us, including our children and elderly.



LET YOUR OLD CELL PHONE GO WILD

Your old cell phone is good for more than a paperweight. Donate it to the Wildlife Waystation for recycling. Located in the Angeles National Forest north of Los Angeles, the non-profit Wildlife Waystation is a safe haven for both native and exotic wildlife and is dedicated to their rescue, rehabilitation, and relocation. Devoted to returning native wildlife to their natural habitat whenever

possible, the 24/7 operation provides animals with everything from hospital facilities and medicine to nurturing and TLC.

Cell phones can be dropped in the letterbox at 1067 Point View Street, or can be sent directly to the Wildlife Waystation at 14831 Little Tujunga Canyon Road, Angeles National Forest, CA 91342-5999. Don't let your old cell phone go to waste.

YOU CAN HELP YOUR LOCAL CARTHAY CENTER SCHOOL EASILY AND AT NO COST TO YOU

Register your supermarket or credit cards online to benefit Carthay Center School.

There are effective, easy, and painless ways to support your neighborhood Carthay Center School. A number of companies have programs that contribute to a specified school. Here's what you can do to help.

Save your box tops and labels

On the top of your Cheerios box you'll find a square 'General Mills Box Tops for Education' coupon. Simply collect these coupons and send them in to the address on the reverse side, or call to have them collected. You'll find these coupons on almost all General Mills products, as well as Pillsbury, Betty Crocker, Yoplait, Go-Gurt, Bisquick, Old El Paso, and others. Additional information on this program is available at: www.boxtops4education.com.

There are similar programs for other products like Pace Salsa, Pepperidge Farm Goldfish, Prego Spaghetti Sauce, Campbell's Soups, and Pepperidge Farm Double Chocolate Milano Cookies.

It doesn't seem like much, but together with your neighbors these benefits add up to a lot

very quickly. For a complete list of products and how to save the 'Proof of Purchase' (Pace Salsa, for example, requires the lid), logon to: www.labelsforeducation.com

A number of online retailers also support a school program. Companies such as Target, Barnes & Noble, Lillian Vernon, Land's End, and Nordstrom's are just a few of the hundreds of participants who contribute up to 18 percent of purchases to Carthay Center School, with no extra cost to you.

Register as a supporter of Carthay Center School (ID #0623483) and use SchoolPop.com as your entry for on-line shopping, and a portion of your purchase will go to Carthay School.

Sign up now at www.schoolpop.com. There's a long list of on-line vendors linked to this Web site. There's another list of participants at www.GiftCertificates.com, as well.

Vons and Macy's also have a school support program listed on www.eScrip.com. Register (Group ID 6483330) your Vons Club card number and your Macy's card at this site and a percentage of your purchases will go to the Carthay Center School PTA.

There is a link to Amazon.com through the school's website: www.carthaycenter-school.org. If you plan on purchasing at Amazon.com, enter through the school's website and a percentage of your purchase will be donated to the school.

All Proofs of Purchase, labels, and box tops can be dropped off at the following address. You can also call or email and request a pick-up.

Susan Nickerson
1070 South Hi Point Street
Los Angeles, CA 90035
Telephone: 323-933-5775
email: Susan@NickersonResearch.com



LOS ANGELES NEIGHBORHOOD IMPROVEMENT (LANI)

Mayor Antonio Villaragosa addresses crowd gathered at the ribbon-cutting ceremony marking the completion of the Los Angeles Neighborhood Initiative (LANI) on Fairfax Avenue. Also attending the event were Fifth District Councilman Jack Weiss and Joyce Perkins, Executive Director of LANI.

LITTLE ETHIOPIA-SOUTH FAIRFAX

Los Angeles Neighborhood Improvement (LANI) Dedication

Mayor Antonio Villaragosa was the principle speaker at the ribbon-cutting ceremony marking the completion of improvement and beautification work on Fairfax Avenue. Working under a \$240,000 HUD grant through the Los Angeles Neighborhood Initiative (LANI) to the Fairfax Avenue Ethiopian Business District (FAEBD), the completed construction program covered the facades, tree-well improvements, sidewalk repair and cleaning, removal of non-functional air conditioners and security bars, and replacement of cracked windows.

Ethiopian Soccer Tournament

Los Angeles was the winner among all the cities bidding to host the 23rd Annual Ethiopian Soccer Tournament held in June. Approximately 50,000 attended the event, many of them visiting the Little Ethiopia/South Fairfax Business District. Special events were held in four of the area's restaurants, where invited guests of honor participated in informative cultural exchanges with the community.

Support Our Advertisers They Support Us

CSNA CONTACTS

Steering Committee Members

Ed Goldberg	931-0272
Kenn Morris	934-9841
Debra Grobman	939-8253
Steve Huston	934-4727
Robin Jameson	931-2774
Ira Klein	(213) 216-6971
Marilouise Morgan	935-3871
Susan Nickerson	965-9990
Michael Sims	857-0025
Charlotte Williams	934-5728

Block Captains

1000 Block of Hayworth
Michael Sims 857-0025

1100 Block of Hayworth
Ed Goldberg 931-0272

1200 Block of Hayworth
Charlotte Williams 934-5728

1000 Block of Hi Point
Ben Lopez 549.0127

1100 Block of Hi Point
Helen Page-Jamerson 936-1880

1200 Block of Hi Point
Alicia Salazar 939-2818

1000 Block of Point View
Robin Jameson 931-2774

1100 Block of Point View
Pearl Greenberg 935-2647

1200 Block of Point View
Wendy Posner 857-0027

1000 Block of Stearns
Sacha Radford 938-1915
Ayn Carrillo 932-6327

Block Captains

1100 Block of Stearns
Cliff Berens 459-4772

1200 Block of Stearns
Rob Fowlkes 937-4432

*Call Your Neighbors
when thinking of buying or selling your home!*

**The WOODWARD
REAL ESTATE TEAM**

A FAMILY  PARTNERSHIP
OVER 65 YEARS COMBINED EXPERIENCE



John, Mary & Andrew Woodward
323-860-4265

WoodwardTeam@aol.com



Proud Sponsor of the Carthay Center School
Board Member of Miracle Mile Residential Association



What if you could change
your life in 30 minutes?



Curves is 30-minute
fitness, commonsense
weight loss and all the
support you need to
achieve your goals.

Curves

The power to
amaze yourself.*

Over 9,000 locations worldwide.

(323) 931-5940

5945 W. Pico Blvd. at HiPoint
Between La Cienega & Fairfax


curvesinternational.com

*Offer based on first visit enrollment, minimum 12 mo. c.d. program. Not valid with any other offer. Valid only at participating locations.

Join Now
50% Off
Service Fee

posh
ar.pico

5542 west pico blvd.
323.931.4338
www.poshonpico.com



**PETITE SARA
CAFE**

6007 WEST PICO BLVD.
LOS ANGELES, 90035
323.954.9443

10% DISCOUNT
With This Ad

BREAKFAST • LUNCH • TAKE AWAY
FINE CATERING • DESERT SPECIALTIES

\$1.10
SHIRTS LAUNDERED
HANGER ONLY
Sport, Fancy & Boxed Extra
Incomming Orders Only
Not Valid With Any Other Offers

\$5.00 FREE
DRY CLEANING
With \$14 Minimum Incoming
Order Only Not Valid On
Drapes, Blankets, Bedspreads
And Other Household Items

MAJOR FRENCH CLEANERS
6014 West Pico Blvd. at Crescent Heights
323.935.8831
One coupon per visit • Not valid with any other coupon or special

CONTRIBUTORS

Debra Grobman	Peter Merlin
Steve Huston	Marilouise Morgan
Robin Jameson	Susan Nickerson
Cynthia Maya	Karen Vice

Editor: Kenn Morris

Graphics: David Logan Design

**LA MAISON
DU
PAIN**

Fresh Bread
Fresh Croissants
Fresh Espresso

Everything freshly baked
on the premises.

5373 West Pico Boulevard
on the corner of Pico & Ridgeley
Open 8am-6pm Mon-Sat
323.934.5858

The House of Bread & Pastries
Boulangerie et Pâtisserie

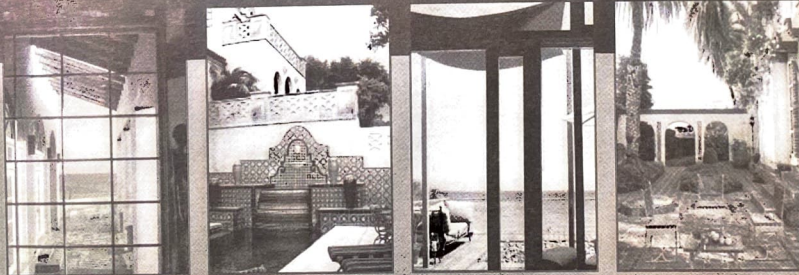
As a Carthay homeowner, Realtor® sponsor of Carthay Center Elementary and an active community volunteer, I have a very special connection to and intimate understanding of our unique neighborhood and a passion for the marketing of the beautiful homes here. When listing a home, I take pride in it as if it were my own and treat your family as if you were part of mine. I will bring you top dollar for your property using the latest and most innovative marketing strategies all while lavishing you with unparalleled first class service. For a fresh perspective and to see why my clients refer me again and again, call me anytime. I'm here to serve you!

Sacha Radford
SACHA RADEFORD

www.RealEstateInCarthay.com

Carthay Center Realtor® Partner

Carthay



photos by Melba Levick

Sacha Radford
SACHA RADEFORD

310.255.3448 office | 310.617.4464 mobile



Prudential
California Realty
JOHN AARON DIVISION

Independently owned and operated. If your home is currently listed, please disregard this notice as it is not my intention to solicit other brokers' listings. If your property is listed with another broker, this is not intended as a solicitation.